



Cottage NEWS

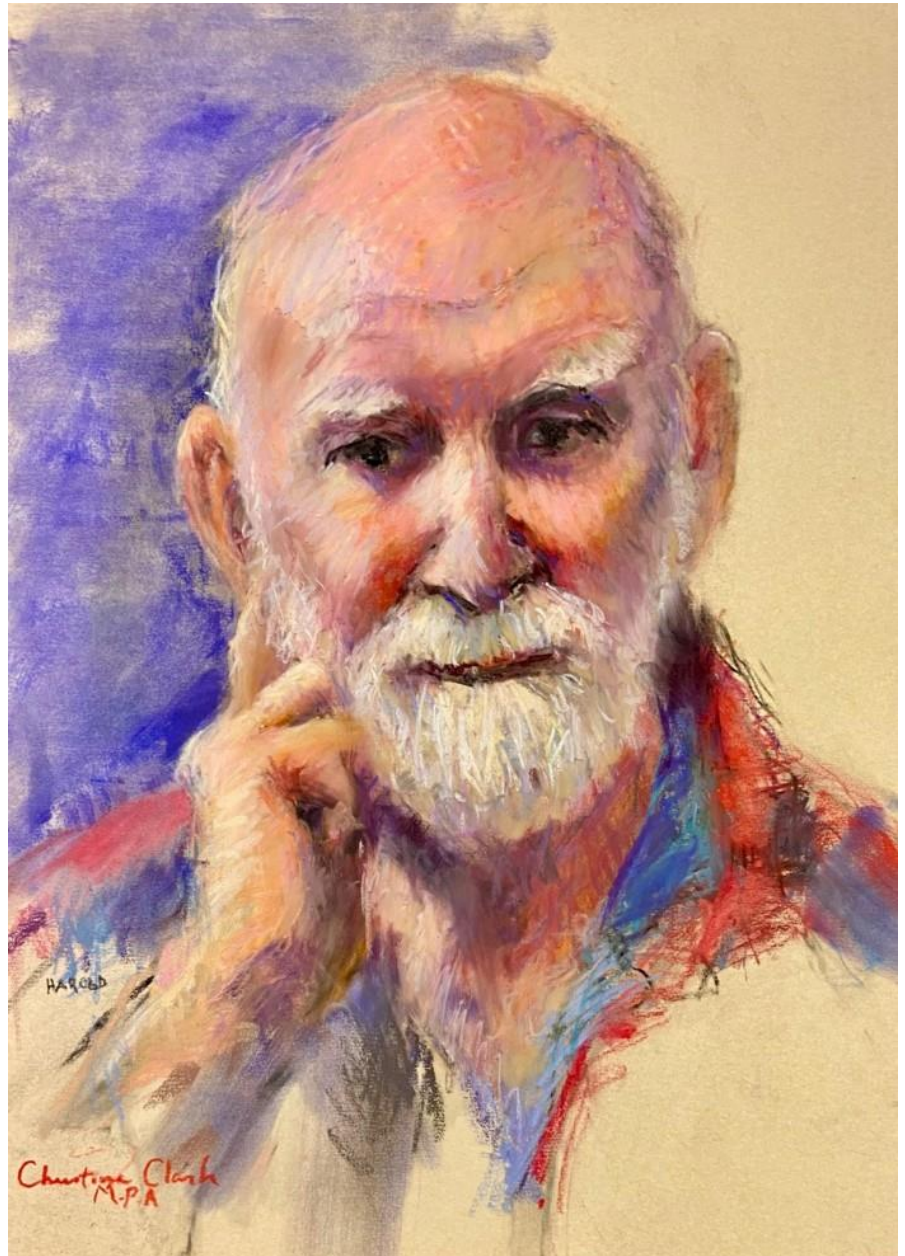
Issue 21: October/November 2023

Explore the
fascinating world of
life drawing
and portraiture
at the

'Full of Life'

Exhibition
3-6 November
2023

Buderim Craft Cottage
Read more page 9



The Buderim Craft Cottage is:

Proudly sponsored by the Sunshine Coast Council's grants program.

We acknowledge and thank the Buderim Foundation who have provided financial and material support for the Buderim Craft Cottage.



Upcoming Event Calendar 2023

Life Drawing Exhibition
3-6 November

Buderim Christmas Fair
24-25 November

In this issue

President's update	2
Thank you Annette Cawthran	5
Drawing gallery	7
Full of Life Exhibition	9
Mixed Media	12
Pottery	14
Photography gallery	13
Calligraphy & Papercraft	15
Members page	17



Jenny's jottings

President's update

This year a keen and green team have enjoyed getting together on the fourth Friday of the month at 3.15 pm to snip, trim, blow, water, weed, chat and enjoy the fresh air.



Buderim Craft Cottage and Buderim Garden Club members enjoying refreshments after gardening. L-R Margaret Woodgate, Gordon Reddek, Steve Wickham, Teddy Grove, Mike Sax and Mike Kelly

I've been joined by Margaret Woodgate (Calligraphy & Papercraft) and Gordon Reddek (Photography) to do an hour or so of gardening at the Cottage. Karen Doyle (Patchwork, Needlework) has also visited with her hedge trimmer.

The *Buderim Garden Club* (BGC) is a friendly group who tend the BWMCA Hall gardens at the same time. They are happy to give us their knowledgeable advice if we have questions about unfamiliar plants.

Teddy Gove, the Shedders Group Convenor at *BGC*, invites us over for lemon cordial and chips at the side of the Hall. What a lovely finish to our gardening!

If you're interested in coming along sometime in the future, please do. Bring along gloves and some tools.



Gordon tackles the high spots in the garden

President's update continued

The Greeting Cards for the Community Project has been finalised for this year, with the talented artists at the Cottage donating 355 original handmade greeting cards and bookmarks to aged care facilities.

Drawing, Mixed Media, Needlework, Painting and Calligraphy & Papercraft (C&P) groups participated, and many cards were like mini masterpieces.

The greeting cards were personally delivered to the Ormsby, Buderim, Buderim Views, St Vincent's Aged Care, Maroochydore and Estia Health in Maroochydore and received with warmth and gratitude by all centres.

The aged care centres use them in different ways. One centre gives each new resident one of our cards with a welcome message on the day of their arrival.

Each interaction with the community helps their residents feel less isolated. Thank you to Gail Fogarty and Anne-Marie Dewar (C&P) for coordinating the project and all those members for contributing to this worthwhile community project.

I ho, ho, hope you are all gearing up for the Buderim Christmas Fair on Friday 24 November 10am-2pm and Saturday 25 November 8am-2pm.

This is when the Cottage transforms into a Christmas wonderland of hand-crafted items, ideal as Christmas gifts.

The Kitchen Coordinator for this event is Irene Van Rooyen (C&P) and she is asking you to please place your name on the Kitchen Roster which is in the Main Work room on the white sliding doors outside the Pottery room.

Donations of food items will be asked for closer to the Fair.



355 original greeting cards and bookmarks were donated to aged care facilities on the Sunshine Coast



Anne-Marie delivers a box of greeting cards to Buderim Views

Pat Reid (PW), Fair Coordinator, and her team, Karel Beech (Atrium) and Deidre Phipps (POT), are full steam ahead with Fair preparations. If you need to contact Pat, her email is patreid@yahoo.com

Deidre has kindly offered to be Kitchen Manager as a regular role throughout the year. She is a whiz at keeping the kitchen environment well maintained; thank you so much!

The Management Committee recently approved new wall fans for the kitchen and some additional lighting in the outdoor courtyard area and will be installed soon.

Throughout this year, the Cottage has been alive with a host of wonderful Exhibitions. Congratulations to the groups and individual artists and crafters who've worked so diligently to produce such a vibrant and varied display of fine works.

President's update continued

The standard has been amazing and truly supported by the community who have attended well. There is more beautiful Exhibition work scheduled prior to the end of the year so make sure you invite your friends and family to come and see it and enjoy some social time together.

The Cottage's AGM will be held on the first Tuesday in December: 5th December. Please join us for lunch at 12pm and the meeting commencing at 1pm. RSVP to May: secretary@buderimcraftcottage.com.au. There are two positions that need to be filled prior to the AGM:

- J VP Events
- J Bookkeeper

Glenys Everson has been our Bookkeeper for the past 10-years and has done a terrific job but would now like a break. She is happy to pass on her knowledge to the next person. Joy, the current VP Events, is also a great support person and can be contacted about her role.

Please email May, if you have an interest in joining the BCC admin team. You will find it rewarding and enjoyable to have a part in the continuing development of the Cottage.

Cheerio for now.

Jenny Williams

Have you visited
the Buderim Craft
Cottage Atrium
lately?



There are hundreds of stunning and unique items created by our members on display and for sale. The Atrium is open seven days a week from 10am to 2pm daily.



Annette is not only a valued volunteer but an accomplished artist in Fibre Art and Surface Design



Thank you Annette Cawthran

Annette is a valued volunteer who joined the Cottage in February 2020 and, in the last three years, has twice been our Winter School Coordinator. This year 163 people participated in the Winter School workshops, 92 were our own members with the other non-members coming from near and far.

“What a wonderful, streamlined, well-organised, seamless and joyful artistic event.” Feedback from a Winter School attendee.

Annette was assisted by a hard-working sub-committee, a supportive husband, Luke, and more than 40 Buderim Craft Cottage volunteers, who donated time and energy to present the Cottage as a positive and welcoming place.

Thank you to all for your efforts! Annette said, “There was a heavy workload in the last two months before the Winter School, but there was the satisfaction of it all coming together and the happiness of people being there. They were having fun.”

Many seeds were sown over a 20-year span before Annette joined the Cottage. She said, “Over those years I would regularly attend the Easter and Christmas Fairs with friends, arriving before 8 am, head straight to the Patchwork stall, meander through and have coffee and sandwiches.”

Annette was kept busy as a Home Economics and Primary teacher and mother of two boys. She first met Audrey Lawrie many years ago, then became reacquainted later the Sunshine Coast through mutual friends.

Audrey encouraged her to come to the Cottage. When Annette retired from teaching at Bli Bli State School, she started in the Fibre Arts and Surface Design group. Here she has found herself surrounded by many mentors who have become good friends.

Special mention was given to Audrey Lawrie, Elizabeth Shirley, Chris Jefferson, Lyn Gooch and Sue Andrew. Her first felt bowl/vessel tutored by Chris piqued her interest and reignited her love of Fibre and Textiles.

Thank you Annette Cawthran continued

Annette's mother and grandmother were professional dressmakers and along with Annette's 15 years of exposure to textiles in schools, it was a natural progression to expand her interest in the FA&SD group.

"I'm happiest when I have my hands in dye!" Annette enthuses. "I really, really, really love dyeing fabric." She particularly enjoys Eco printing and Shibori, a Japanese manual resist dyeing technique.



The fabric may then be embellished with contemporary stitching or slow stitch. Annette produces wall hangings, book covers, cards, tea towels, scarves and bags and wants to go into clothing for herself with part of the garment incorporating her hand-crafted fabric.

She has always really loved the high standard of work at the Cottage and the reasonable prices. Annette's is always delighted that someone wants to buy her creations.

We, at the Cottage, are happy to have her skills and talent with us and thank you, Annette, for your wonderful contribution as the Winter School Coordinator and being a vibrant Cottage member!



Annette and husband Luke at the Thank You morning tea hosted by the Fibre Arts and Surface Design Group



Are you interested in becoming a member of the Buderim Craft Cottage?

Visit our website to find out about the range of groups and upcoming events.

- Drawing, life drawing and portraiture
- Calligraphy
- Yarns and Fibres
- Fibre Art and Surface Design
- Needlework and Lace
- Machine Embroidery
- Mixed Media
- Painting
- Patchwork
- Photography
- Silversmiths
- Pottery

[Learn more](#)



The Buderim Craft Cottage is a community association dedicated to the study and promotion of art and craft. It has 13 groups and over 300 members.

We are a non-for-profit community association. Members pay an annual fee which entitles them to use the cottage facilities.



drawing

After the challenges of travelling both within Australia and overseas in the last few years, Drawing Group members have certainly made up for it this year.

From language courses in Italy to safaris in Tanzania to cruising the Mediterranean, we have been on the move.

Some of us travelled afar, some did bucket list trips in Australia, or simply revisited familiar places.

We drew what we saw, and a few examples are included. Many more travel experiences are still waiting to be given life.

"The question is not what you look at, but what you see." Henry David Thoreau



In Amsterdam by Gaye



Cable Beach sandhills by Sue



NGV rear garden by Sue

Drawing group gallery



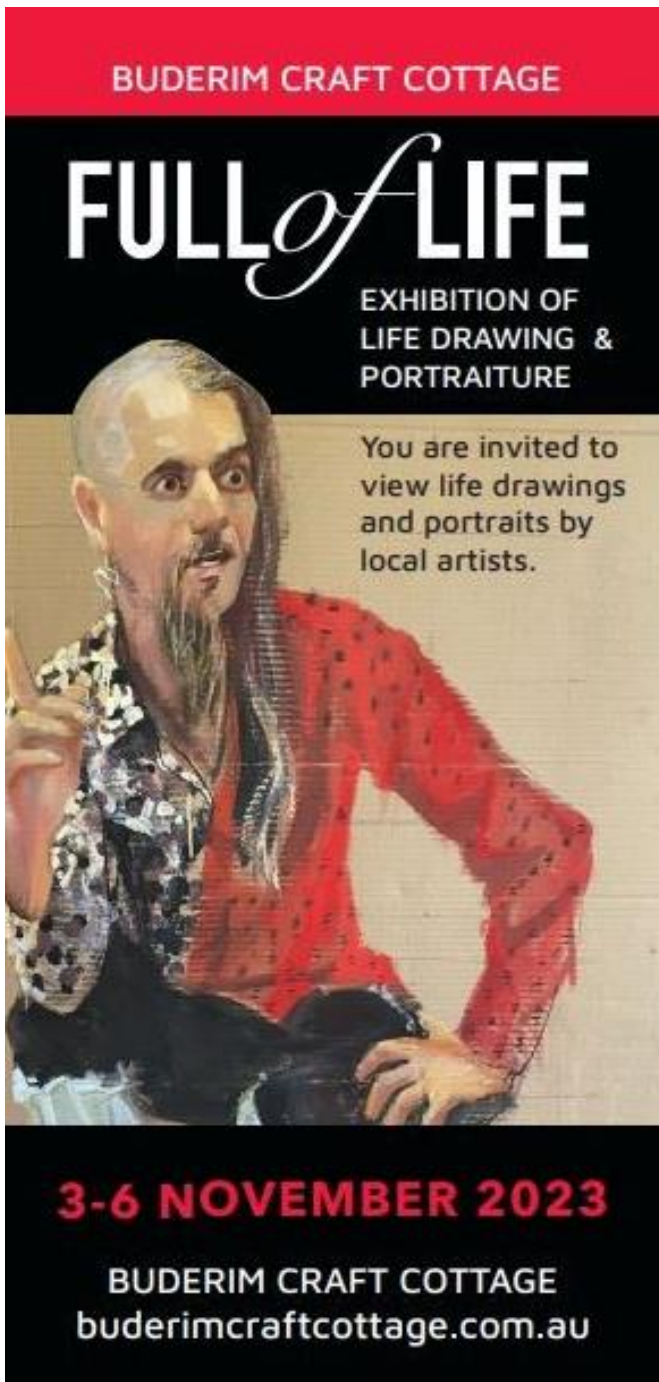
On safari in Africa by Gaye



Ruby Falls Kimberly by Sue



Cleveland by Christine



Explore the fascinating world of life drawing and portraiture at Buderim Craft Cottage's own answer to the Archies at the **Full of Life exhibition** 3-6 November 2023.

Fabulous faces and figures by members of the Life drawing and Portraiture group will grace the walls of the Cottage's Atrium Galley

- Friday to Sunday, 3-5 November: 9 am to 3 pm
- Monday 6 November: 9 am to 12 noon

The exhibition will feature works by local artists in pastel, acrylic, charcoal, pen, and ink and more. Subjects include professional art models and volunteer models from the local community.

Life drawing and portraiture group leader Andrea Douglas says the group's versatility and depth of talent is impressive.

Exhibitors include master pastelists, Christine Clark, and an award winning pastelists, Dee Roy.

For those who have always wanted to try their own hand at portraiture, free 'come draw' community sessions will be held on the Saturday and Sunday of the exhibition in the Atrium Gallery courtyard.

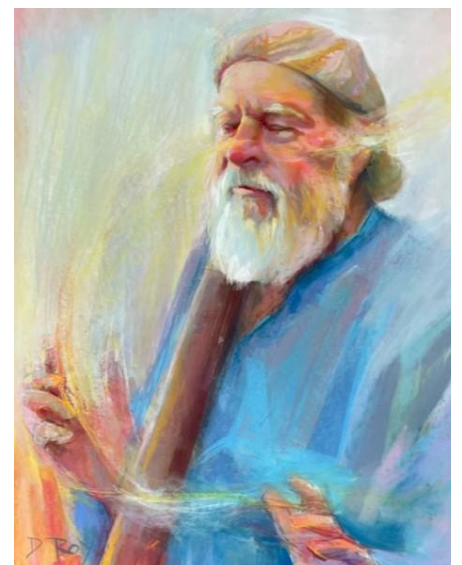
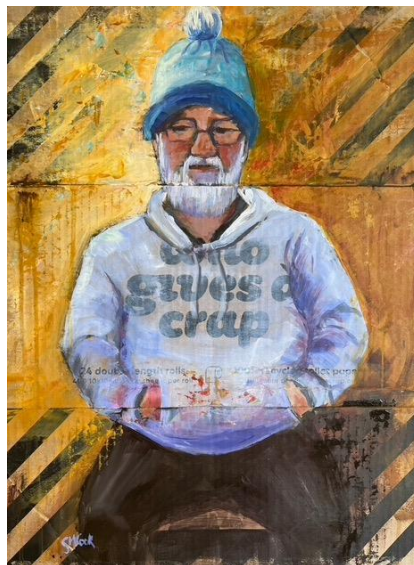
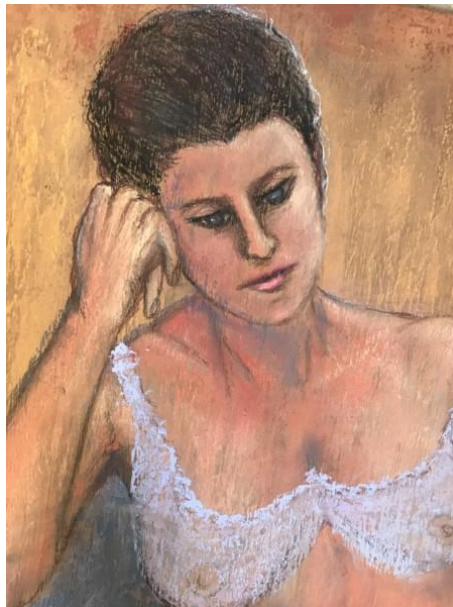
Members of the Life drawing and Portraiture group will be on hand to demonstrate techniques at sessions on

- Saturday and Sunday, 4-5 November
- 10 am to 12 noon

Materials will be provided and a model will pose for budding artists.

The Full of Life exhibition and come and draw sessions will be held at the Buderim Craft Cottage, Atrium Gallery, 5 Main Street, Buderim.

Life Drawing and Portraiture Gallery



MIXED MEDIA

The Mixed Media Group has been kept very busy over the past few months with another successful Off the Shelf event and some very creative sessions led by group members.

Off The Shelf was coordinated by a very enthusiastic committee who curated a selection of quality artworks, many of which flew off the walls and gallery shelves. A vibrant flow of people came to the event and many of whom stayed to sample the delights of the kitchen and participated in the MM interactive art installation.

Thanks go to Annie Felton, Sue Needham, Sue Dingle, Jan Hagan, Elaine Bienholz and Jillian Bergman for their terrific efforts.

Art is joy and brings out creativity and happiness, allowing us to appreciate and share many styles.

MMers have been attending monthly internal workshops and honing their skills with new techniques and exercises.

In September, MMers learned the finer points of coloured pencil techniques, using a small kit of materials, notes, examples, and exercises to explore the artistry of coloured pencil techniques to create luminous artworks and effects. This workshop was led by Roxanne Marie, who demonstrated the techniques.

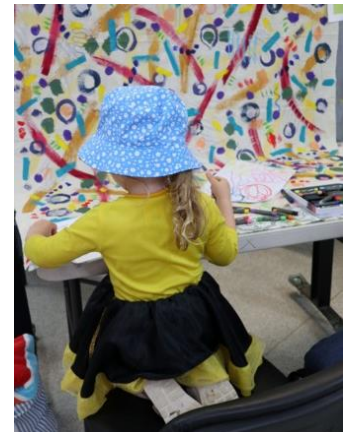
In October, the group experimented with basic Zentangle styles, learning how to incorporate further detail in their art. Annie Felton led the workshop, providing examples and guidance on how to develop patterns, fill in negative space and use Zentangle for shading.

MMers enjoyed both workshops and are looking forward to the next one, to be led by Greg Wuth who will combine calligraphy and *zentangle.

**The Zentangle method creates images by drawing structured patterns called 'tangles' using combinations of dots, lines, simple curves, S-curves and orbs.*



Another successful Off the Shelf Event at the Cottage & a young visitor enjoying the interactive activities



Annie's zentangle creation (above left) and members learning embossing techniques

POTTERY

Twenty-one artist lovingly sculpted pieces for the 2023 Sculpture Garden Exhibition. The Peoples' Choice is a simple ballot asking visitors to name their favourite piece of art and the artist. One visitor wrote "almost everything".

Under Deidre's strong leadership, the Sculpture Garden Exhibition sparkled. Whichever way you look at the collaborative effort by the Pottery Group, it sings!

Our thanks to the Cottage community and to the many loyal supporters who return year on year.

Deidre, Karel and Sarina are the backbone of the extensive organisation and planning needed for this annual event that involves all members of the Group.

All aspects that include advertising, setting up, manning the floor, running the kitchen over two weekends, balancing the books and then dismantling are undertaken with enthusiasm and a humour fuelled optimism.

This was an amazing job, well done!



A wonderful array of sculptures and ceramic works were on display



The hardworking pottery group preparing for the 2023 Sculpture Garden exhibition



Photography Gallery

One of the great things about the Craft Cottage Photo Group is the creative way members treat the monthly challenges. From architecture, to the natural environment, smartphone disruption and people at work – the results are an array of amazing perspectives, creativity and technical skill.



Bill Carroll's technical ability is amazing. The combination of five photos gives a very clear image of the Australian landscape between Windorah and Birdsville

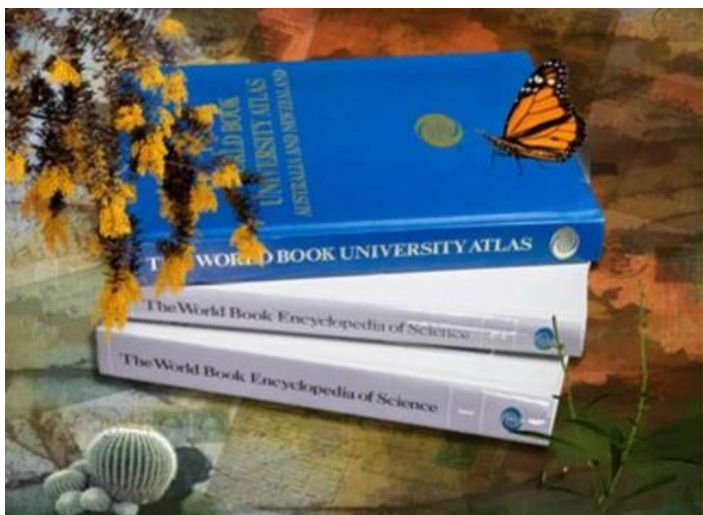


Capturing people at work

In the challenge entitled 'architecture' the ideas were amazing: from 'War in Cambodia' to 'Yum', we got a totally different perspective of architecture including the classic architecture photo below (right).



'Social Disruption'



Natural environment



"For me, the camera is a sketchbook, an instrument of intuition and spontaneity"

Henri Cartier-Bresson, *The Mind's Eye: Writings on Photography and Photographers*

Calligraphy & Papercraft

The Inspiration

Hermann Kilian, born in 1929 in Germany, was a calligrapher, typographer and book designer. His work looks exquisitely simple, but each single letter stroke was carefully planned and crafted to perfection.

His works constantly referred to time, and perhaps unsurprisingly, he worked slowly with detailed attention to each letter. Kilian's favoured writing tools were the broad-edged nib and the ruling pen.

The Ruling Pen was originally used for technical drawings in engineering and cartography and has been adopted by calligraphers around the world.



An example of one of Hermann Kilian's favoured writing tools - the Ruling Pen



Gemma Black is preparing to demonstrate a 'Sgraffito' technique with gold leaf at her final workshop

The Teacher

The Calligraphy & Papercraft Group were treated to a wonderful weekend 'adventure with Hermann Kilian', presented by the internationally renowned Australian artist, calligrapher and Kilian specialist, Gemma Black.

Gemma is based on ngunnawal country Canberra and was a recipient of a Winston Churchill Memorial Trust Fellowship.

She has taught in Italy, Germany, Spain, South Africa, USA, Canada, the UK and most importantly, Buderim Queensland. Her work is housed in private and public collections including the Fitzwilliam Museum, Cambridge, UK, the European Parliament and Parliament House Canberra.

[\(Apology to Australia's Indigenous Peoples - Manuscript, 2009\)](#)

The Workshop: 'adventure with Hermann Kilian'

Gemma expertly guided the group through a series of exercises during the October weekend, encouraging her students to seek the quirky nature of the Kilian style. She stepped through building a skeleton alphabet and then adding the weight of the letter with a focus on curves and terminals.

The group experimented with pencil, pen and ink, broad edged nibs, drawing nibs, different nib sizes and of course the Ruling Pen.

It was an inspiring workshop and much was learned. The Calligraphy and Papercraft Group workshop is Gemma's last as teacher - she is leaving teaching behind to focus on her own artwork, and private and public commissions and exhibitions.

Gemma is currently preparing for a solo exhibition as featured artist at the Lady Franklin Gallery Tasmania in December.



The workshop students with Gemma

Would you like to contribute to this newsletter?

Send your ideas, articles and photos to newsletter@buderimcraftcottage.com.au by 27 January 2024. The next newsletter will be published in February 2024.

Please include your name, group and a contact number. And don't forget that all photographs must be approved by the participants before being sent.



Editor's pick – a wealth of wonderful images has yet again been contributed to this edition including this portrait from the Life Drawing group!

Discounts for Members

A number of local Sunshine Coast businesses give discounts to Cottage members. Phone them to learn more about the discounts on offer.

Accolades (framer and trophies)
26 Nicklin Way, Minyama
mobile: 0417 208 345
Email:
accoladesawards@yahoo.com.au

Eckersley Art Store
11 Nicklin Way, Minyama
Phone 07 5444 0311

Sunshine Coast Art & Framing Gallery
8 Nicklin Way, Minyama
Phone 07 5444 0009

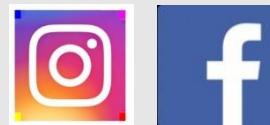
Johno's Fabric Variety
77 Duport Avenue, Maroochydore
Phone 07 5443 5966

Art School Co
32 Wisers Road (next to IGA)
Mobile 0491 756 172

Would you like to learn more about the Buderim Craft Cottage?

Visit our [website](#)

Like our facebook and Instagram



Call us on 07 5450 1714

Or come along to the Cottage located at

5 Main Street, Buderim QLD 4556